

MySQL Installation and Setup

Rev. 3/21/06

Overview

In this section, you will:

1. **Install MySQL**
2. **Configure MySQL**
3. **Install MySQL Administrator**
4. **Install MySQL Control Center**
5. **Configure and start a MySQL database**

1. Installing MySQL

1.1

Use Windows Explorer to view the documents on the OpenEAI Training materials CD. View the files in the MySQL directory.

1.2

Right click on the **mysql-5.0.15-win32.zip** file and select the directory to which you want to unzip the .exe file.

1.3

Once unzipped, double click on the **Setup.exe** file to start the installation wizard for MySQL Server 5.0.

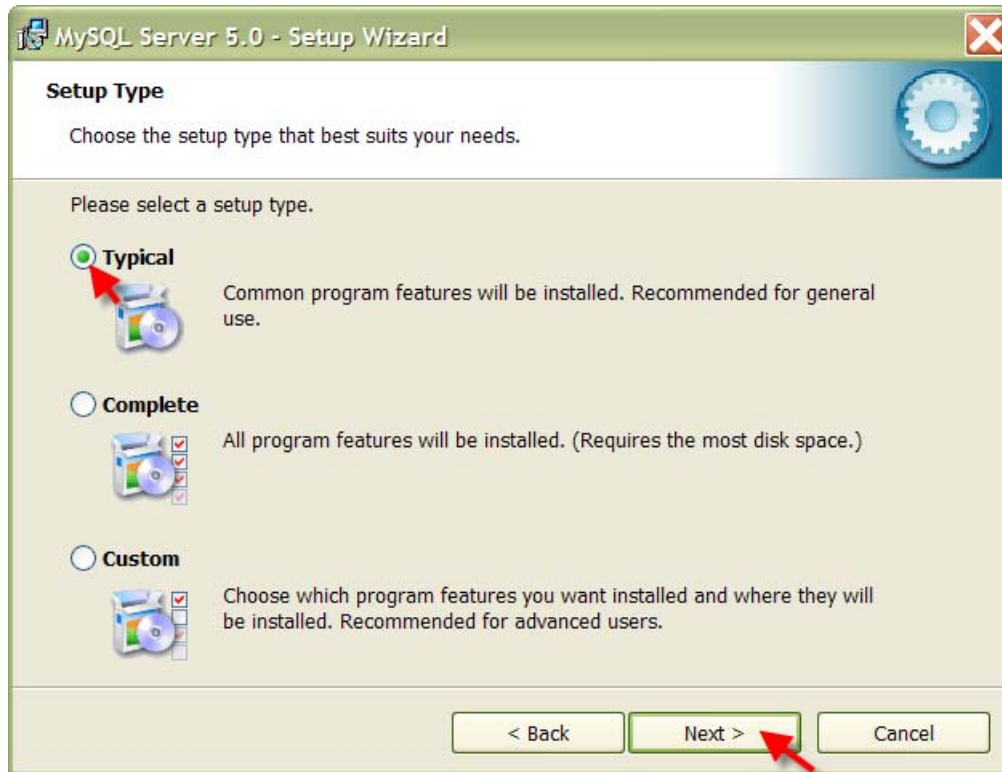
1.4

On the Welcome screen for MySQL Server 5.0, click on the “Next >” button.



1.5

Under Setup type, choose the “Typical” installation. Then click “Next >”.



1.6

On the “Ready to Install the Program” window, click on the “Install” button.

1.7

On the MySQL.com Sign up screen, select the “Skip Sign-up” radio button and then click on “Next >”.



1.8

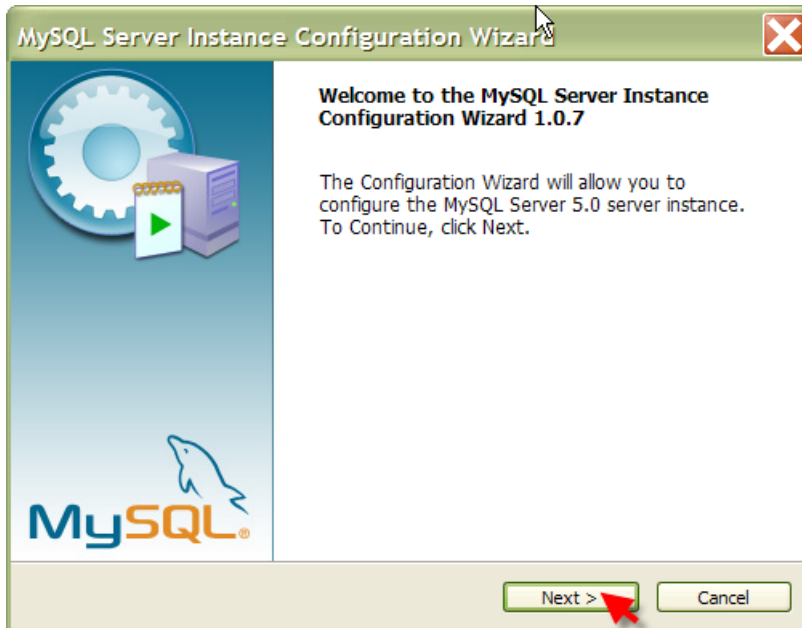
Make sure the “Configure the MySQL Server now” checkbox is selected, and click on “Finish”.



2. Configuring MySQL

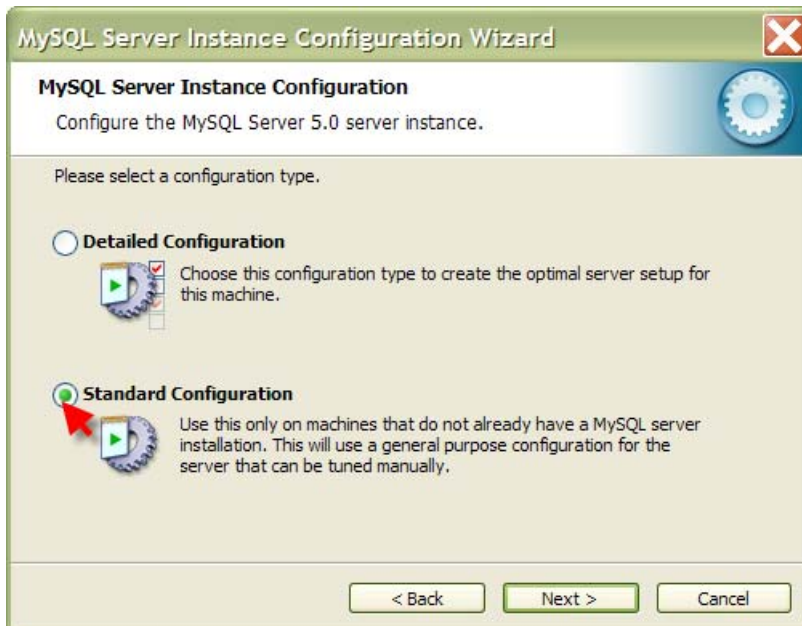
2.1

On the first configuration screen, click on “Next”



2.2

On the “MySQL Server Instance Configuration” window, select the “Standard Configuration” option, and click on “Next >”.



2.3

On the next screen, make sure both the Windows service and bin directory options are selected, and click on “Next >”



2.4

Uncheck the “Modify Security Settings” checkbox, and click on “Next >”.



2.5

On the “Ready to execute” screen, click on the “Execute” button.

2.6

Click on “Finish”

3. Installing MySQL Administrator

3.1

Select the **mysql-administrator-1.1.5-win.msi** file from the OpenEAI Training CD and save to a temp directory.

3.2

Double-click on the **mysql-administrator-1.1.5-win.msi** file to start the wizard.

3.3

On the Welcome screen, click on “Next”.



3.4

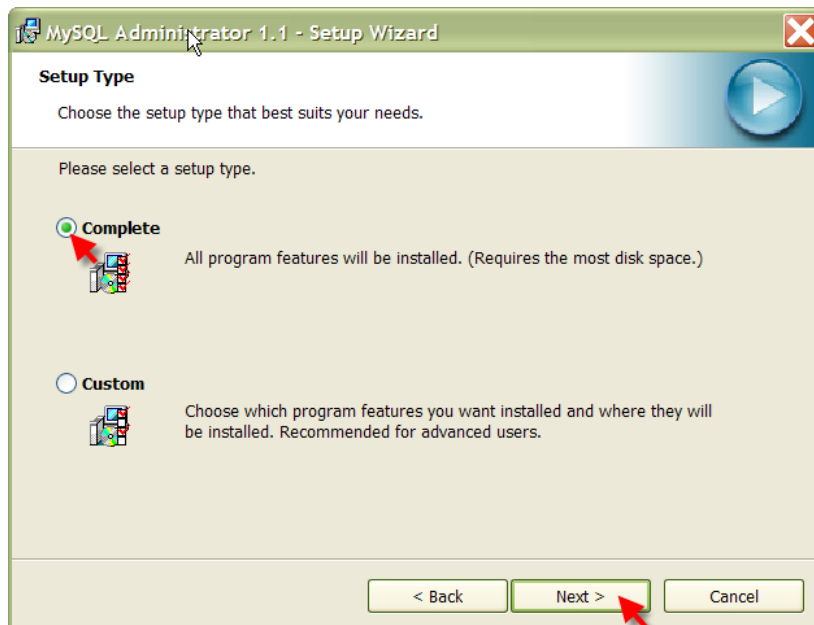
Choose the “I accept...” radio button and click “Next >”.

3.5

On the “Destination Folder” screen, accept the default install location by clicking on “Next”.

3.6

On the “Setup Type” screen, choose the “Complete” radio button and click on “Next >”.



3.7

On the “Ready to Install...” screen, click on “Install”.

3.8

On the “Wizard Completed” screen, click on “Finish”.

4. Installing MySQL Control Center

4.1

Choose the **mysqlcc-0.9.4-win32.zip** file on the OpenEAI training CD. Unzip the file to a temp directory.

4.2

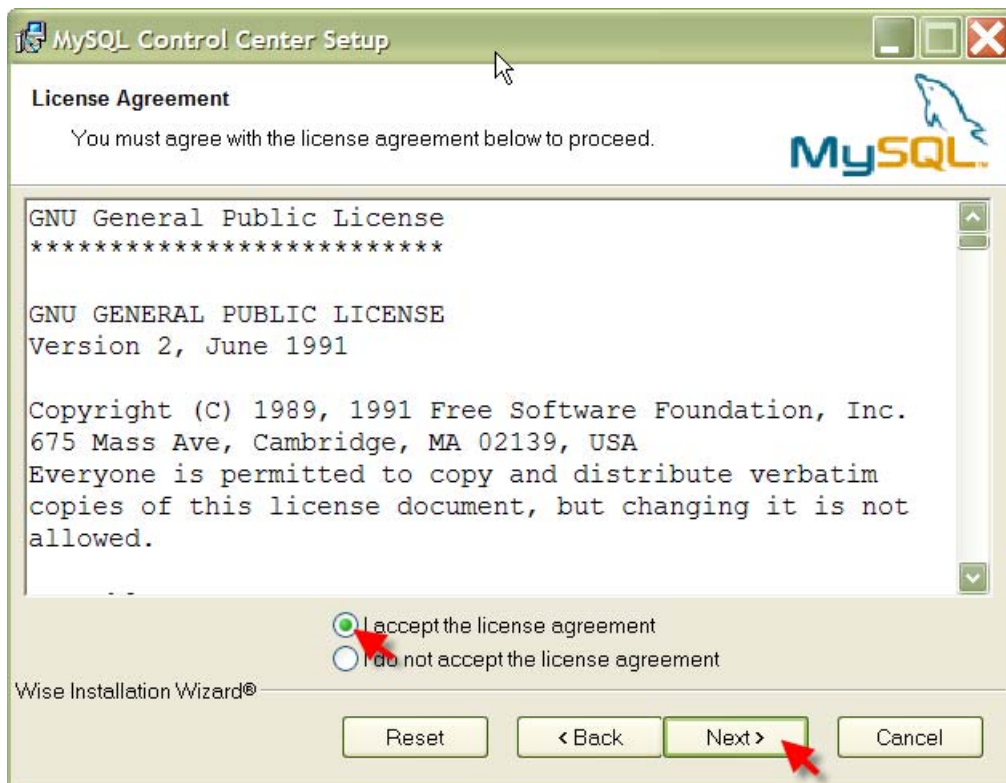
Double-click on the **Setup.exe** file to start the wizard.

4.3

On the Wizard Welcome screen, click on “Next >”

4.4

On the license agreement screen, select the “I agree...” radio button. Then click on “Next >”.



4.5

Click “Next >” on the Readme informational screen.

4.6

On the “Destination Folder”, accept the default and click on “Next >”.

4.7

On the “Select Features” screen, click on “Next >”.

4.8

On the “Ready to Install...” screen, click on “Next >”.

4.9

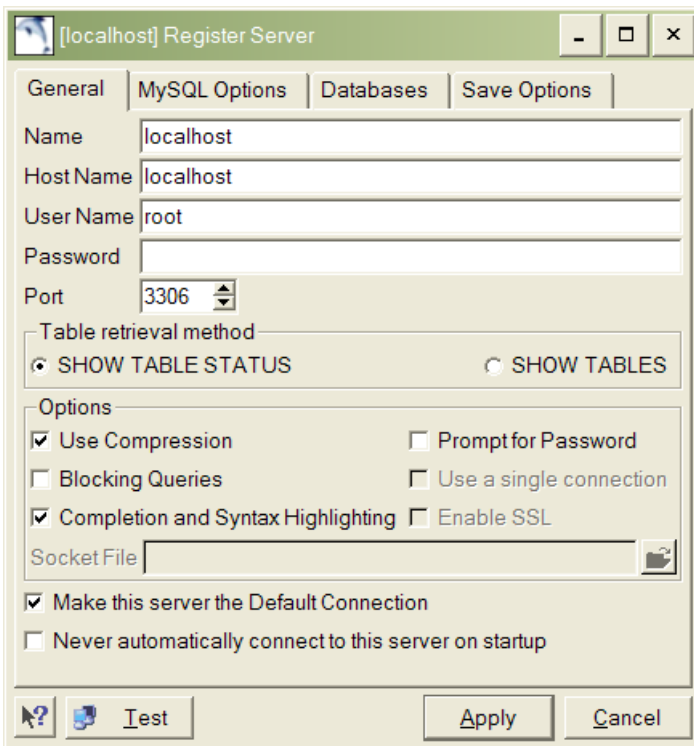
When MySQL Control Center successful completion screen appears, click on “Finish”.

4.10

To start MySQL Control Center, from your desktop go to Start → MySQL Control Center → MySQL Control Center.

The first time you start the MySQL Control Center, the following parameters are needed to register the server:

Name: localhost
Host Name: localhost
User Name: root
Password: <none>
Port: 3306 (default)



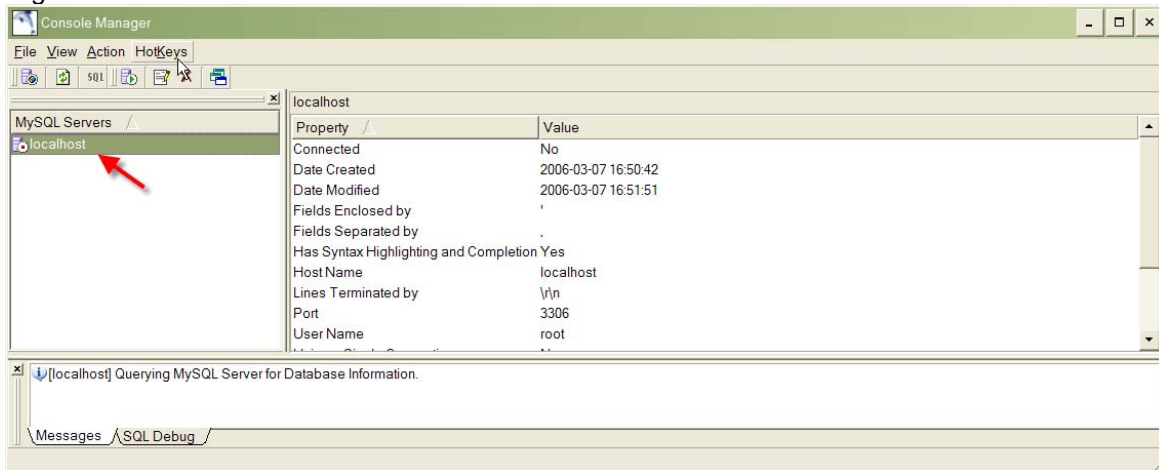
5. Connecting to the MySQL database

5.1

Go to the Start button on your Windows desktop, hover over applications, and select the MySQL Control Center application.

5.2

Right click on the localhost server and select Connect.



You have now successfully installed and configured MySQL.