

Java Installation and Setup

Rev. 3/18/09

Overview

In this section, you will:

1. **Check for Java version on your computer**
2. **Install Java 1.5**
3. **Setup Environment Variables**
4. **Set Java version in Path Variable**

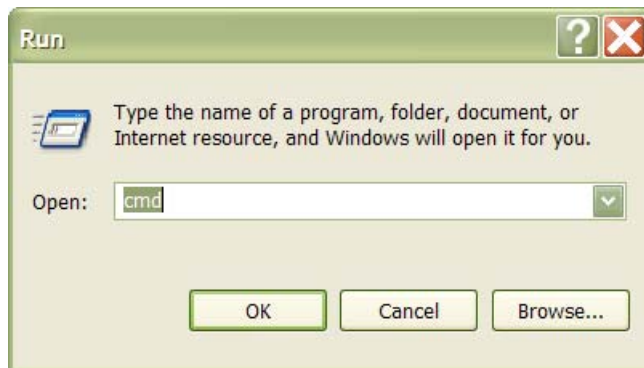
1. Check for Java version

1.1

From your Desktop, go to Start→Run...

1.2

To open a DOS command prompt, type "cmd" in the Run Window and click on OK.



1.3

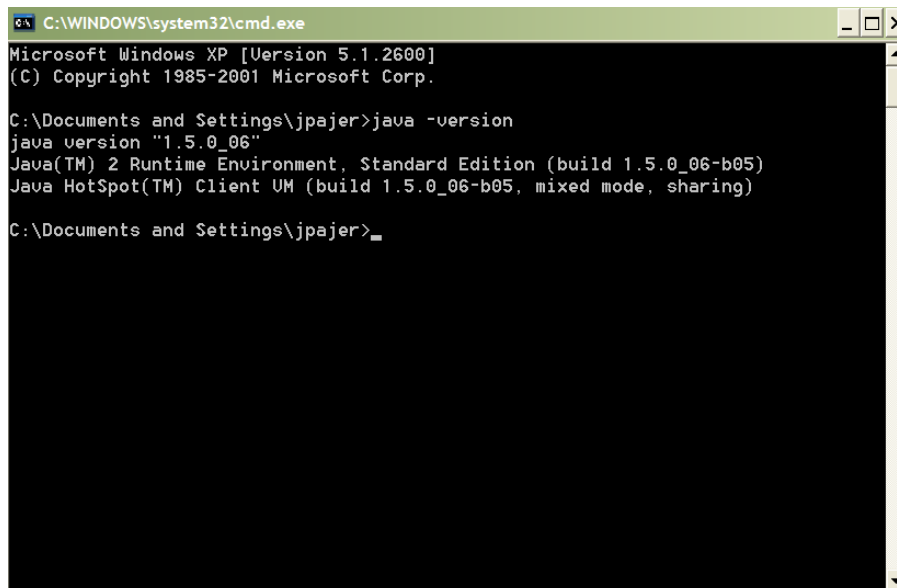
Type in: **java -version**

Press enter.

You should see a response like this:

```
java version "1.x.x.xx"
```

If it has a version earlier than 1.5, you will need to download and install java 1.5.



```
C:\WINDOWS\system32\cmd.exe
Microsoft Windows XP [Version 5.1.2600]
(C) Copyright 1985-2001 Microsoft Corp.

C:\Documents and Settings\jpajer>java -version
java version "1.5.0_06"
Java(TM) 2 Runtime Environment, Standard Edition (build 1.5.0_06-b05)
Java HotSpot(TM) Client UM (build 1.5.0_06-b05, mixed mode, sharing)

C:\Documents and Settings\jpajer>
```

2. Install Java

2.0

From the OpenEAI Training CD, find the directory called "Java". To a temp directory (or directory of your choice, download the file named:

jdk-1_5_0_06-windows-i586-p.exe

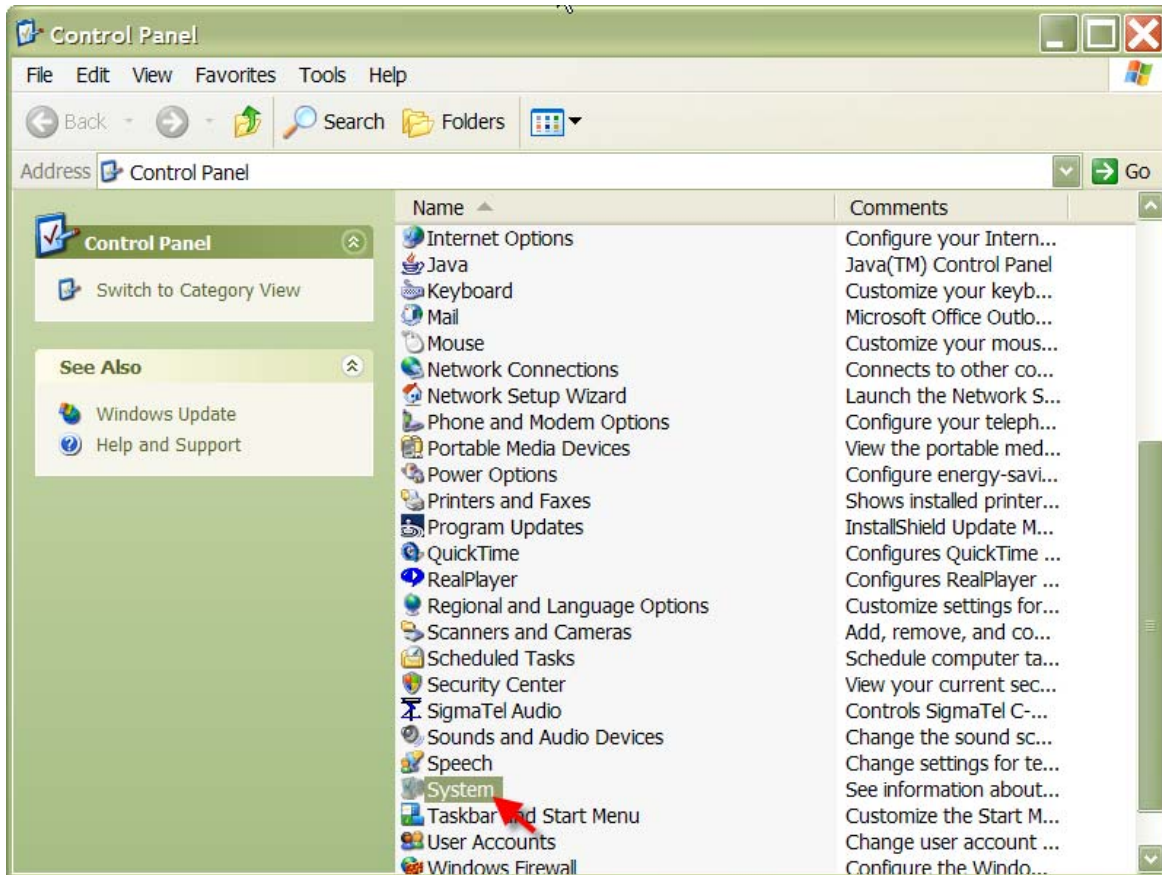
2.1

Run the aforementioned executable file accepting all defaults.

3. Setup Environment Variables

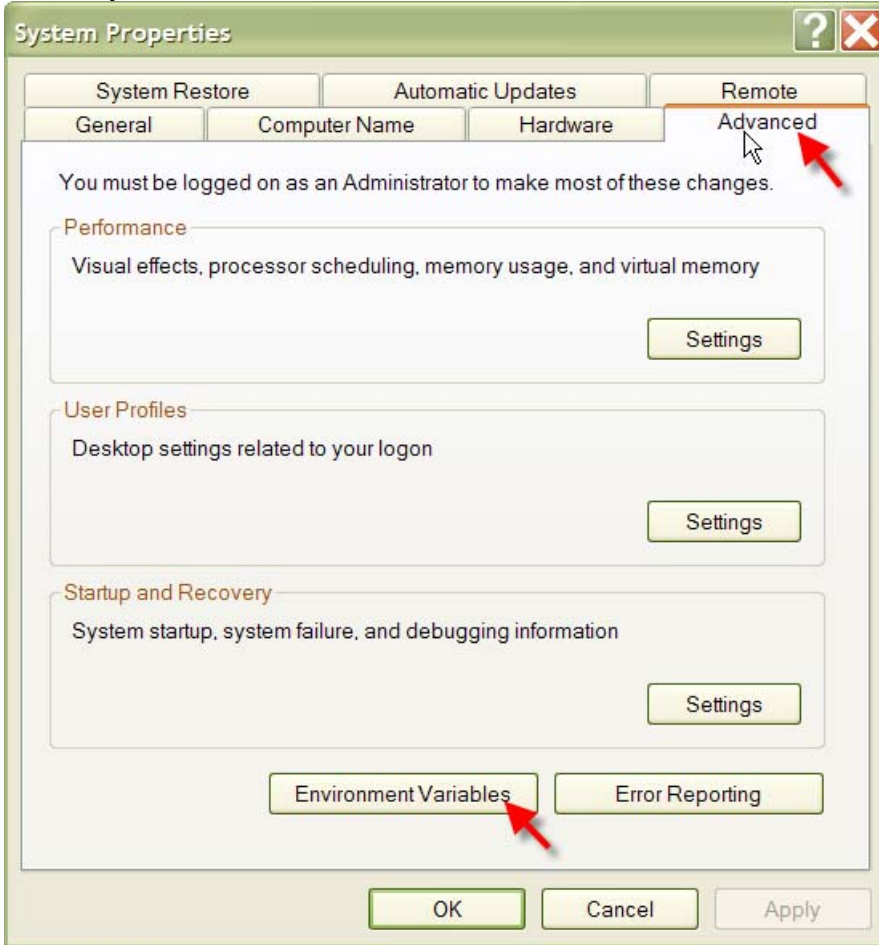
3.1

Go to your Windows Control Panel, and select "System"



3.2

On the System Window, select the "Advanced" tab.

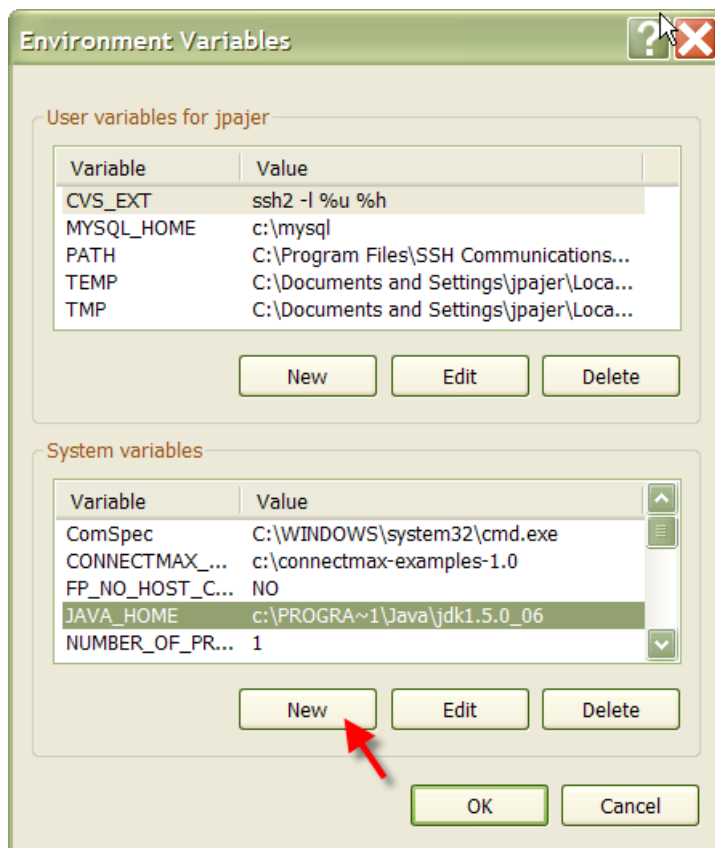


3.3

On the Advanced tab, click on the “Environment Variables” button.

3.4

Under “System Variables”, click on the “New” button.

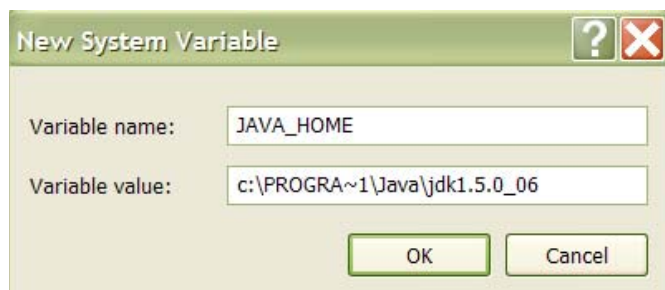


3.5

Enter the Variable name: JAVA_HOME

*** Enter the Variable value: c:\PROGRA~1\Java\jdk1.5.0_06

*** This version may be different for you. Make sure you enter the correct information from your installed Java file.



3.6

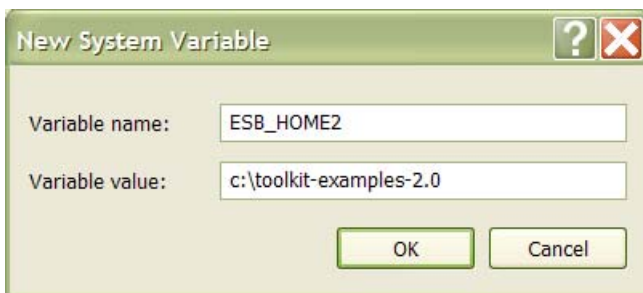
Click on OK. Note that the variable JAVA_HOME is now listed in the system variables.

3.7

While you are on this screen, we will enter a new environment variable for the Toolkit directory. Follow Step 2.4, then enter the following:

Enter the Variable name: OPENEAI_HOME

Enter the Variable value: c:\openeai-examples-2.0



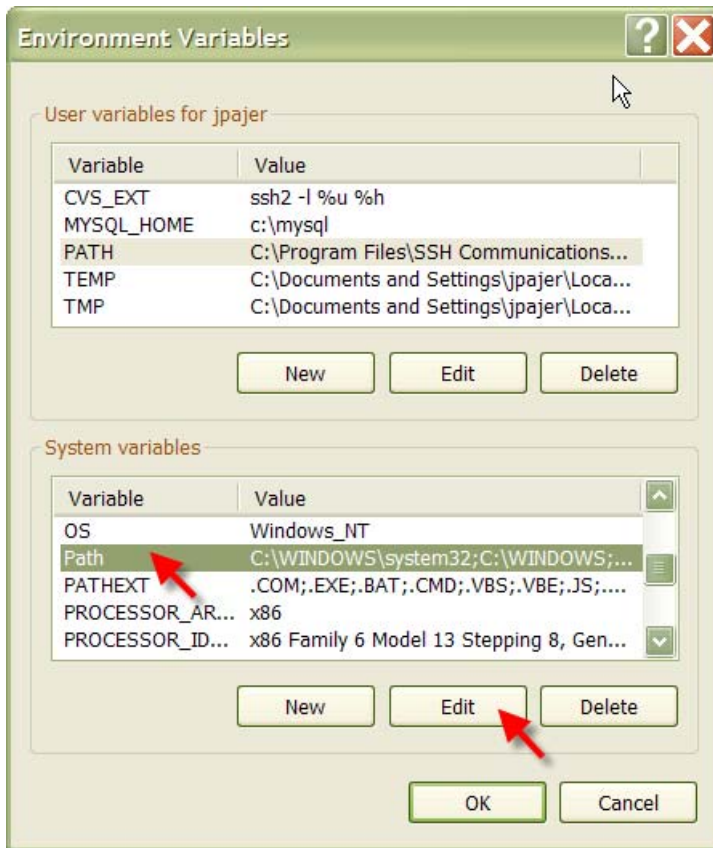
3.8

Click on OK. Note that the variable OPENEAI_HOME is now listed in the system variables.

4. Set Java Version in System Variables

4.1

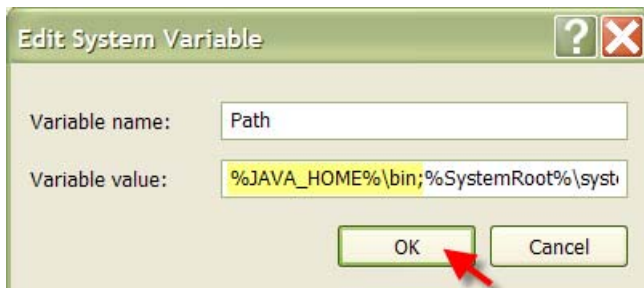
From the Environment Variables screen, under System Variables, select "Path" and click on "Edit"



4.2

At the beginning of the Variable value, enter the following:
%JAVA_HOME%\bin;

→ Note: do not delete any information in the Variable value. Only add the variable listed for JAVA_HOME.



4.3

Click on OK to Edit the Path System Variable.

4.4

Click on OK to exit the Environment Variables window.

4.5

Click on OK to exit the System window.

4.6

Check to see if your version of Java is updated by following steps 1.1 – 1.3 in this topic section.

You have now installed the correct Java version for continuing with this course.